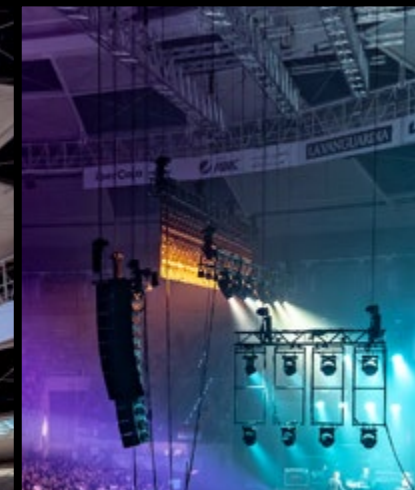


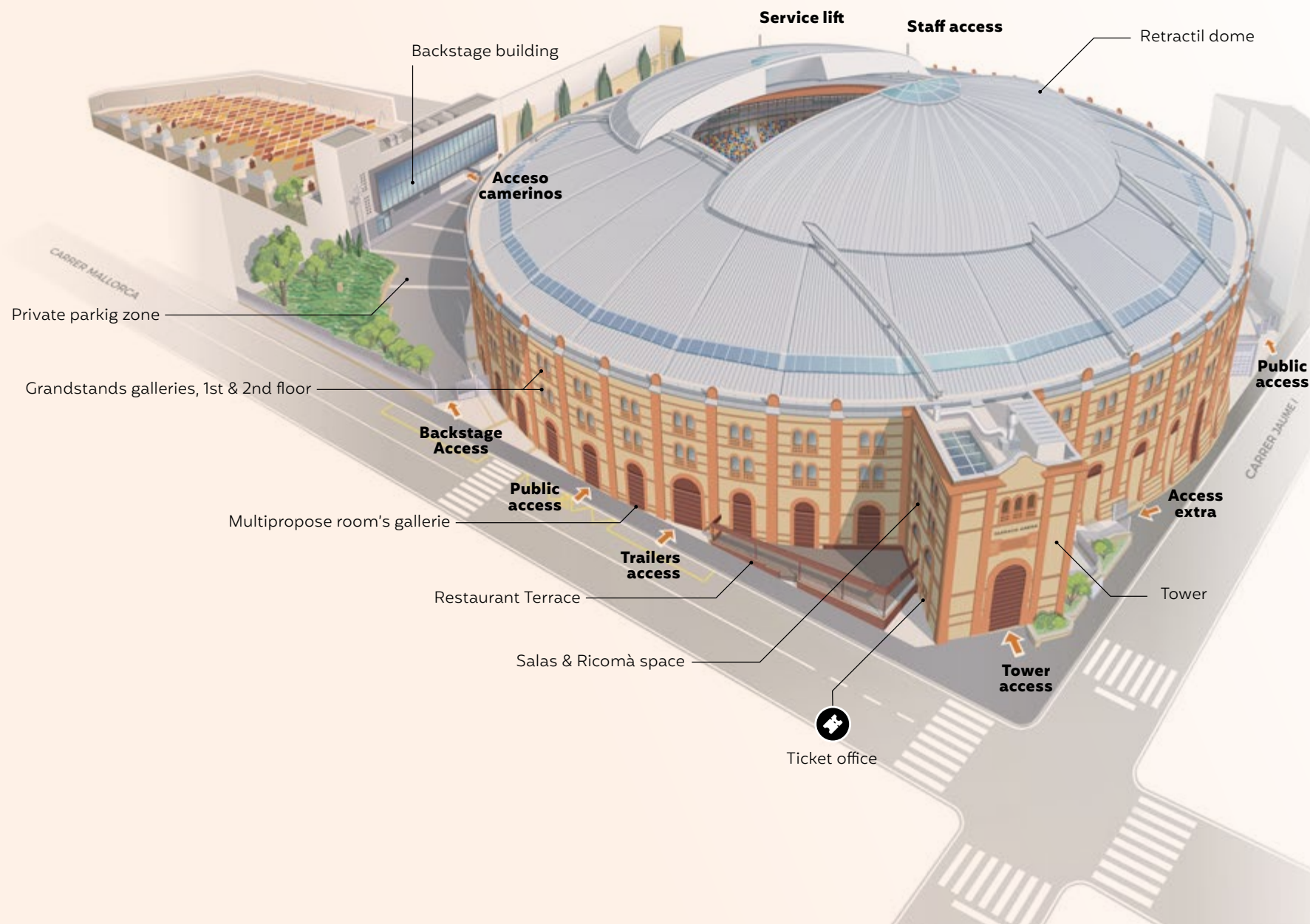


English

TECHNICAL DOSSIER



TARRACOARENA



GENERAL DATA OF THE ENCLOSURE

CHARACTERISTICS	4
AUXILIARY SERVICES	4
ELECTRICAL SUPPLIES	4

PRODUCTION SERVICES

STAGE	6
RIGGING	6
BACKDROP AND CURTAIN	7
BLACKOUT	7
PLATFORMS	8

SPACES

HARROW	10
2n FLOOR	11
LIFT TRUCK	11
PLANO GRADAS	12
DRESSING ROOMS BACKSTAGE	13
CATEGING, FOOD & BEVERAGE, WARDROBE	13
TICKET OFFICE	14
MERCHANDISING	14
PRESS ROOM / RICOMA	15
TECHNICAL ROOM / COFFE CORNER-GREEN ROOM PERSONAL PROD.	16
3D ROOM / DRESSING ROOMS ON STAGE FOOT	17
PRODUCTION OFFICE	17
DRESSING ROOM 1 ARTIST/S	18
DRESSING ROOM 2 ARTIST/S	18
DRESSING ROOM 1-A/B ARTIST 1 PAX	18

ENCLOSURE FORMATS

CAPACITY	20
STANDING ON THE ARENA + HARROW	21
SITTING ON THE ARENA	21
SITTING ON THE ARENA + HARROW	21

FIXED EQUIPMENT

RIGGING MAP	23
SOUND	24
LIGHTNING	24
RIGGING AND STRUCTURES	25
PERSONAL	25
SOUND COVERAGE EXPANSIONS	26
SOUND LIMITATION SYSTEM	26

ELECTRIC SYSTEMS

ELECTRIC SYSTEM	27
-----------------	----

ACCESS

PUBLIC ACCESS	30
ARTIST ACCESS / PROMOTERS	30
ACCESO TRANSPORTES CARGA Y DESCARGA	31

GENERAL DATA OF THE ENCLOSURE

CHARACTERISTICS

- Maximum height: 32m.
- External diameter: 94m.
- Diameter in arena: 55m.
- Retractable dome diameter: 40m.
- Surface in arena: 2.390 m²
- Outer surface: 2.740,71 m²
- Building surface: 555 m²
- 2nd gallery surface: 1.678 m²
- 8 stairs to access the upper floors
- Fixed seats: 4,974
- Maximum capacity: 10,800 pax
- 31 Doors / Emergency exits
- 10 square access openings
- Loading and unloading access: 3.60m x 4.72m
- Permanent rigging
- Permanent AV
- Permanent Black Out

AUXILIARY SERVICES

- LED interior lighting
- Air conditioning 1,000 Kw
- Elevator
- Lift truck 1,000Kg
- 10 WC
- Auxiliary rooms
- Access for large vehicles to the arena through gate number 3.
- Door Size: 3.60 m wide x 4.77 m high.
- Backstage
- Warehouses 374 m²
- 3 meeting rooms
- Restaurant
- Ticket office
- Wi-Fi Internet according to area

ELECTRICAL SUPPLIES

- 1 Cuadro principal 1.000 A con conexiones POWERLOCK 400 y 250.
- 1 Track sub-panel approved and certified for 101 Kw with CETACT and POWERLOCK connections.
- 10 electrical panels in Arena of 16A
- 4 electrical panels on the 2nd floor of 16A
- 4 electrical panels on the 2nd floor of 32A

PRODUCTION SERVICES

STAGE

- LAYHER EV 104 type stage with 2.07 m x 1.04 m modules
- Measurements 12.42 x 10.21 m with ramp and side access stairs.
- Options to expand stage up to 18.63 x 12.42 + wings
- In case of disassembly and assembly, the costs are borne by the promoter (disassembly and assembly with structural certificate).

Our stage meets the highest load requirements, capable of supporting 750 Kg / m², resistance higher than that required by regulations.

RIGGING

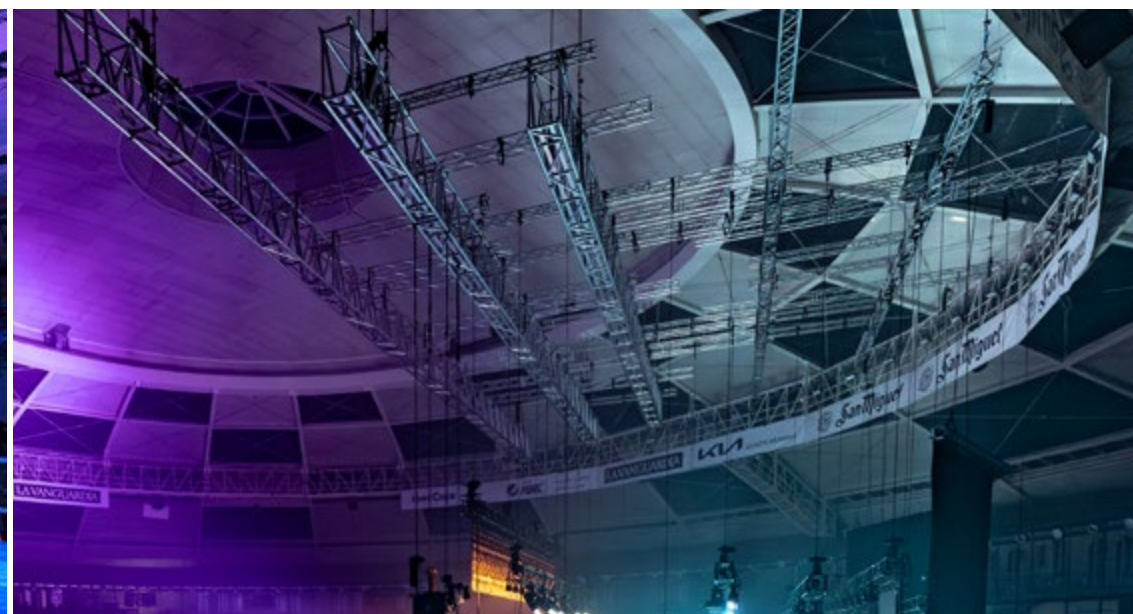
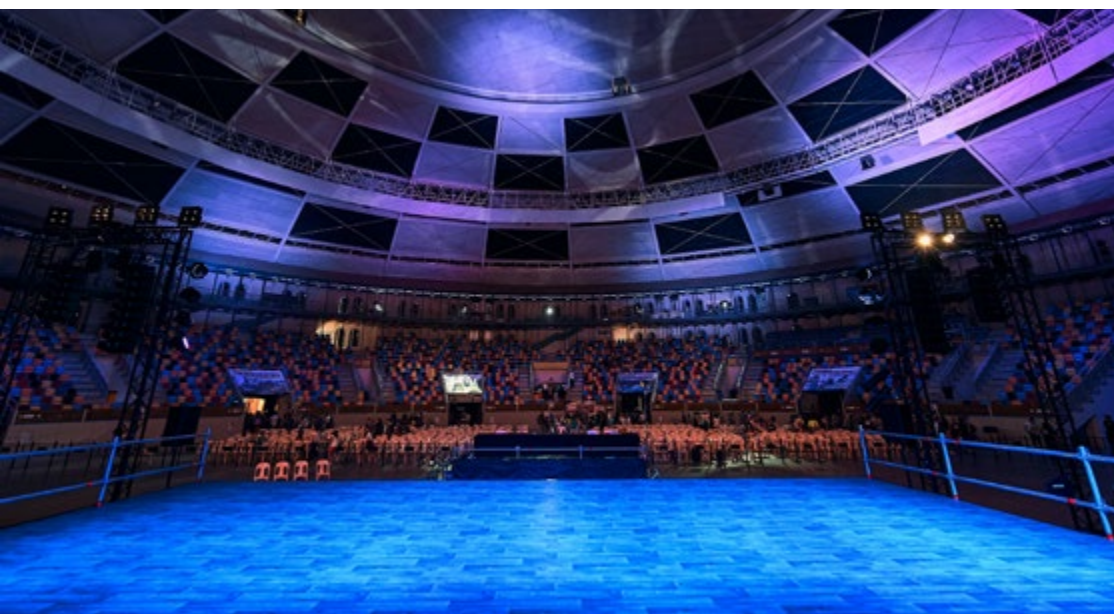
Tarraco Arena has a rigging grid installed using the Mammoth Prolyte M145RV system, unique in Europe.

The installed grill transmits loads to the fixed dome of the enclosure, being capable of

support up to 40 tons of load, well above the usual requirements of any event, even the most demanding ones such as national and international artists.

Work surface greater than 250 m². 12 additional points (H) to extend the grill or reconfigure it to offer loads at any point on the track and/or in 360° configurations on the fixed dome.

Rigging study service and load certificate endorsed by an engineer.

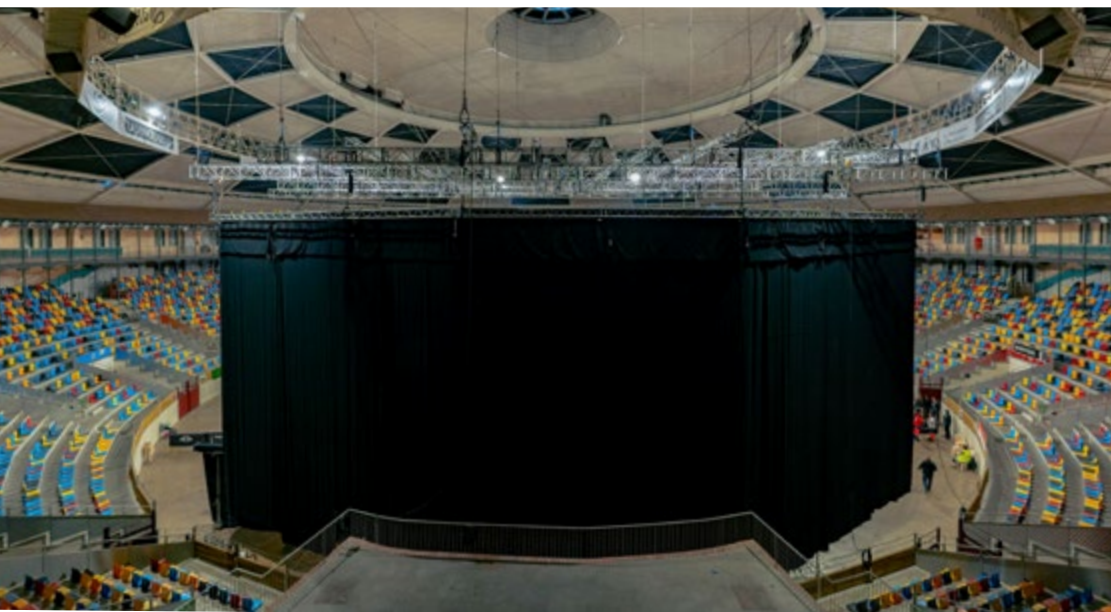


BACKDROP AND CURTAINS

At Tarraco Arena we have a background system to install based on the client's needs with dimensions of 18 m wide x 12 m high. Likewise, we have curtains to measure and section the square.

BLACKOUT

The venue has a fixed blackout system that cannot be removed. If it is removed, the customer must pay to replace it.



PRODUCTION SERVICES

PLATFORMS

Configurable with Layher structure. It is a platform, with a maximum capacity for 25 pax in standing format



SPACES

LIGHTNING AND LED SCREEN
Second floor ring over the stands and track



HARROW

The stand is configured in 11 sections with a total of 4,974 fixed seats.

The plaza can be sectioned with differentiated accesses per vomitorium according to the desired capacity, adapting the accesses through the enabled doors.

Once you access the venue on the ground floor, the entrances face the ground floor ring, from there you access the stands on floor 1.

Opening the stands will depend on the selected format, concert, standing track event, corporate event, form - 360°, etc.

2ND FLOOR

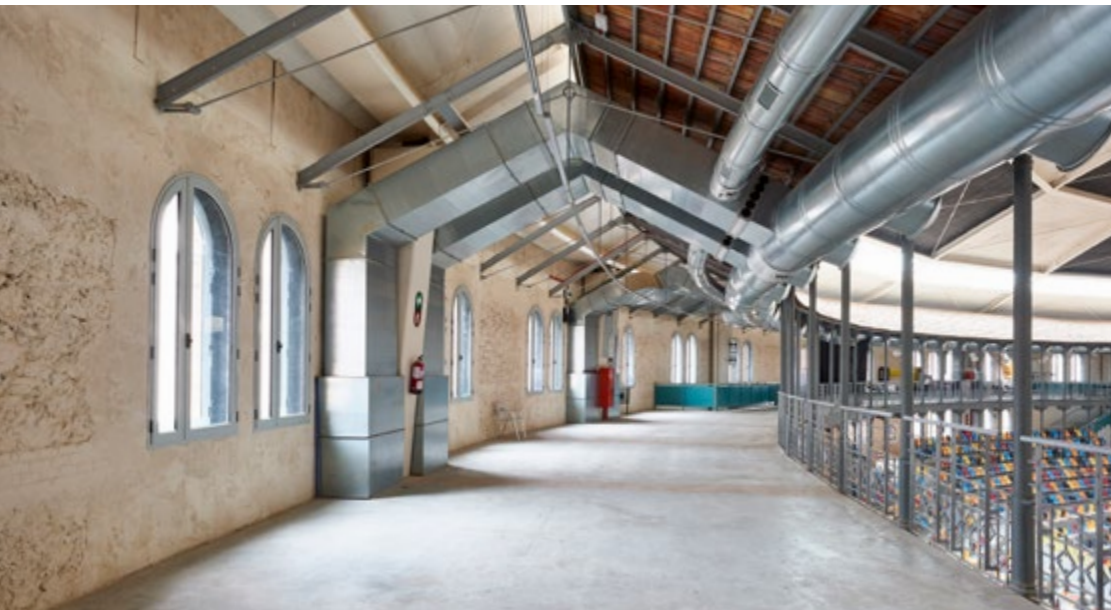
There is a second ring floor, above the track and the stands, of 1,687 m² with 7 stairs with direct access from the first floor.

A forklift is available to lift equipment to the 1st and 2nd floors..

LIFT TRUCK

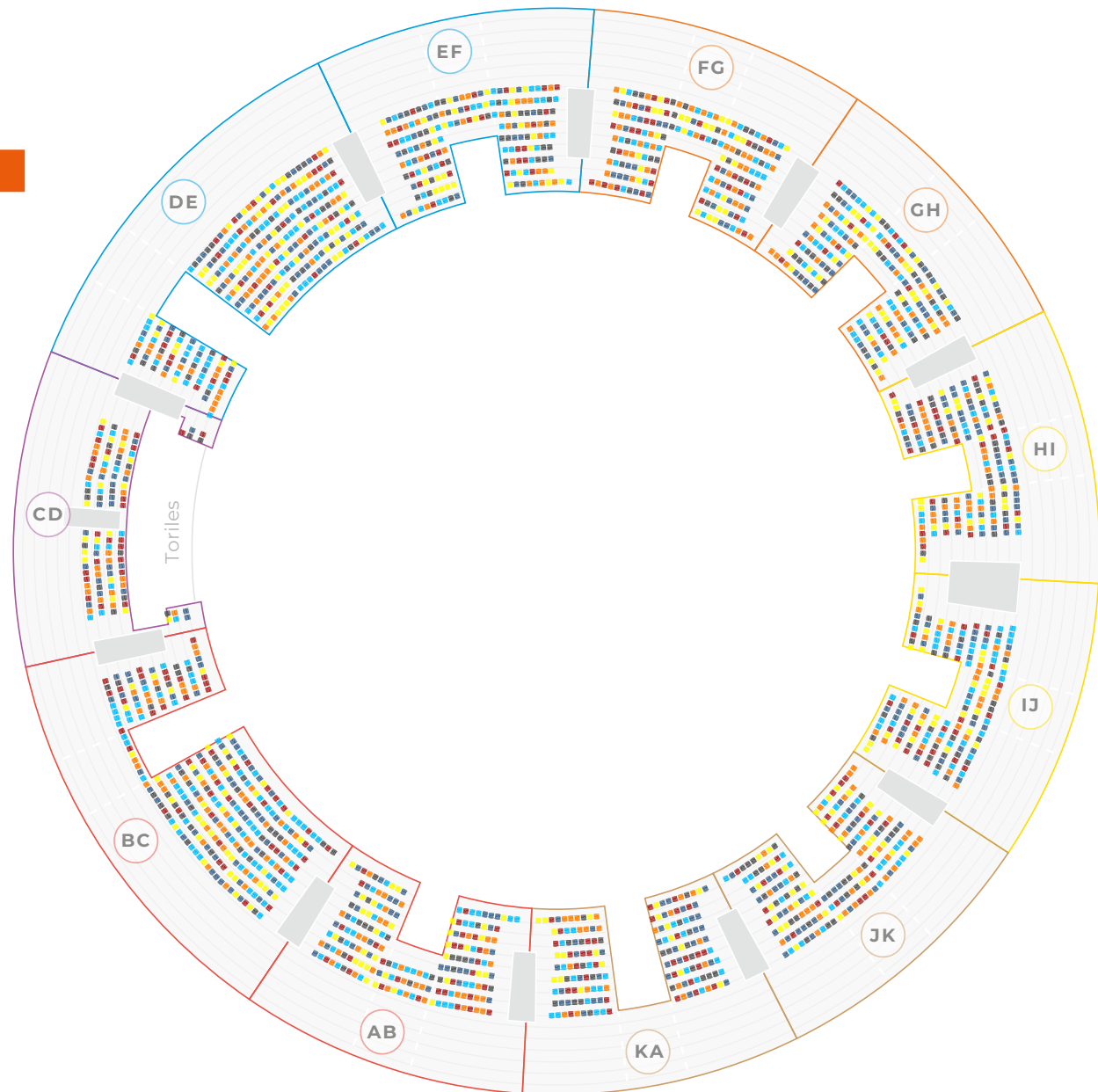
There is a lift truck equipment, which is located in the rear parking lot of the facility.

This forklift has the specifications of 1,000 Kg.



GENERAL SPACES

HARROW MAP



BACKSTAGE DRESSING ROOMS

Production office 27 m², 2 units of individual dressing rooms of 12 m² composed of

- 1 wc
- 1 shower

2 units of dressing rooms for groups of 55 m² composed of:

- 3 spades
- 2 toilet cabins
- 4 showers
- 1 PMR toilet cabin with shower and sink

CATERING, FOOD & BEVERAGE AND WARDROBE

The catering service is exclusive to Cal Blay.

The bars and/or restaurants are managed exclusively by the operator Cal Blay.

The wardrobe at the request of the client.



SERVICE SPACES

TICKET OFFICE

We have 2 windows located next to the main access door and offer the possibility of selling tickets to all pedestrians who circulate in the vicinity of the Tarraco Arena during the events.

MERCHANDISING

If the artist requires merchandising points, Tarraco Arena will install 1 or 2 tables (depending on needs), a power point and fencing at each point of sale, the cost of each one is €250 (VAT not included)..





PRESS ROOM / RICOMA

It is an independent room located in the tower, in the southern area of the enclosure, accessible from the intersection between Calle Mallorca and Calle Jaume I.

This space is located on the 1st floor, with capacity for about 40 people, where they can offer receptions, press conferences or management meetings.

This room has direct access to the 1st floor and the presidential stands, where personalities are usually accommodated by protocol at events such as the great Castells international competition.

STAFF SPACES

TECHNICAL ROOM / COFFEE CORNER-GREEN

In front of doors 9-10 is a double space with enough capacity for 40 people with direct access to the backstage-stage area.

It can be configured with tables, chairs and refrigerators to serve technical production teams. This space does not have a shower



3D ROOM / DRESSING ROOM ON STAGE FOOT

In front of doors 17 is a low-seat, carpeted space with enough capacity for 15 people. It can be used as a small dressing room for dancers, a production office or a simple dressing room with direct access to the backstage-stage area.

It can be configured with tables, chairs and refrigerators.
This space does not have a shower.



ARTIST PRODUCTION OFFICE

In the backstage parking area with access to the dressing room-changing room tunnel, it is an open space with capacity for 15 people, it can be furnished with tables and chairs and a vertical refrigerator with a door, it has direct access to the tunnel of the dressing rooms 1-2 and individual showers in 1-A and 1-B.

This space has its own WIFI antenna that serves the dressing room area.

DRESSING ROOM 1 ARTIST-BAND

In the backstage parking area with access to the dressing room-changing room tunnel, it is a completely renovated space equipped with an open space of about 55 m², 2 enabled toilets + 1 PMR with shower and sink, 3 sinks and 4 showers.

The space can be provided with furniture for artists upon request.



DRESSING ROOM 2 ARTIST-BAND

In the backstage parking area with access to the dressing room-changing room tunnel, it is a completely renovated space equipped with an open space of about 55 m², 2 enabled toilets + 1 PMR with shower and sink, 3 sinks and 4 showers .

The space can be provided with furniture for artists upon request.

DRESSING ROOM 1-A ARTIST 1 PAX

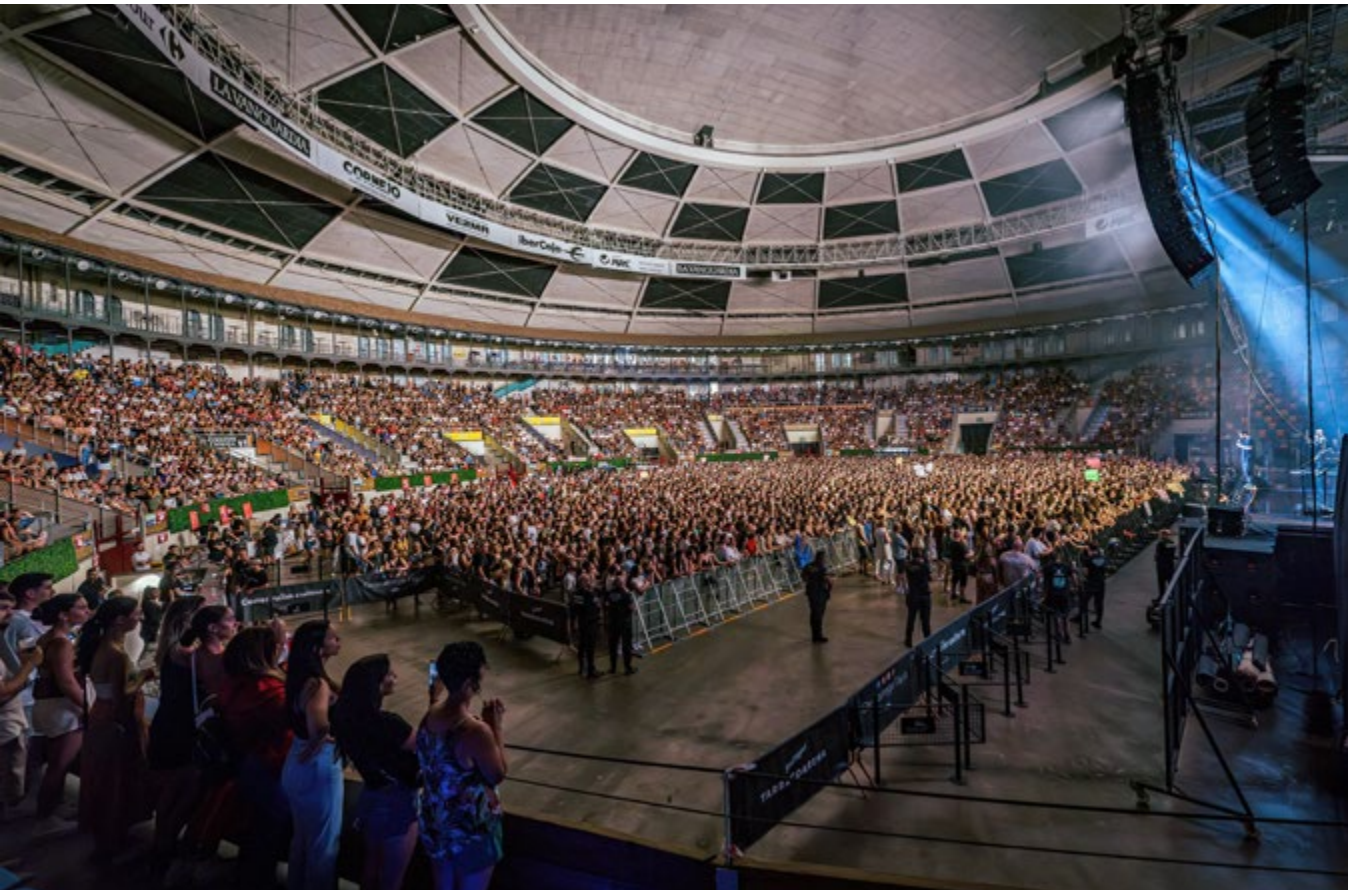
In the backstage parking area with access to the dressing room-changing room tunnel, it is a small individual dressing room with a toilet and full shower.

DRESSING ROOM 1-B ARTIST 1 PAX

In the backstage parking area with access to the dressing room-changing room tunnel, it is a small individual dressing room with a toilet and full shower.



ENCLOSURE FORMATS



CAPACITY

Tarraco Arena has a maximum capacity for 10,800 people. Depending on the previous capacity for each show, we can adapt the space with a large format or medium format montage.

The hall has a track with 2,500 m², being one of the largest in its category.

Depending on the position of the stage, capacity of up to 4,500 people can be admitted on the track with a stage on the track and using the venue's fixed staffing system.

STANDING ON THE ARENA + HARROW

For this format we add the front stands and we can open the stands depending on the desired capacity.

Thanks to our rigging system we can have a perfect view of the stage from any point of the stands, with openings close to 180° from the front.

This allows us to have configurations of up to 7,800 people combining track and stands.

SITTING ON THE ARENA

It is possible to configure a seated only track format for presentation events, stand-up sessions or recitals where the audience is preferably seated. In this format, up to 1,800 people can be configured to sit on the court without having to open stands..

SITTING ON THE ARENA + HARROW

By opening the stands it is possible to add capacity up to a maximum of 5,000 seated people for a standard configuration.

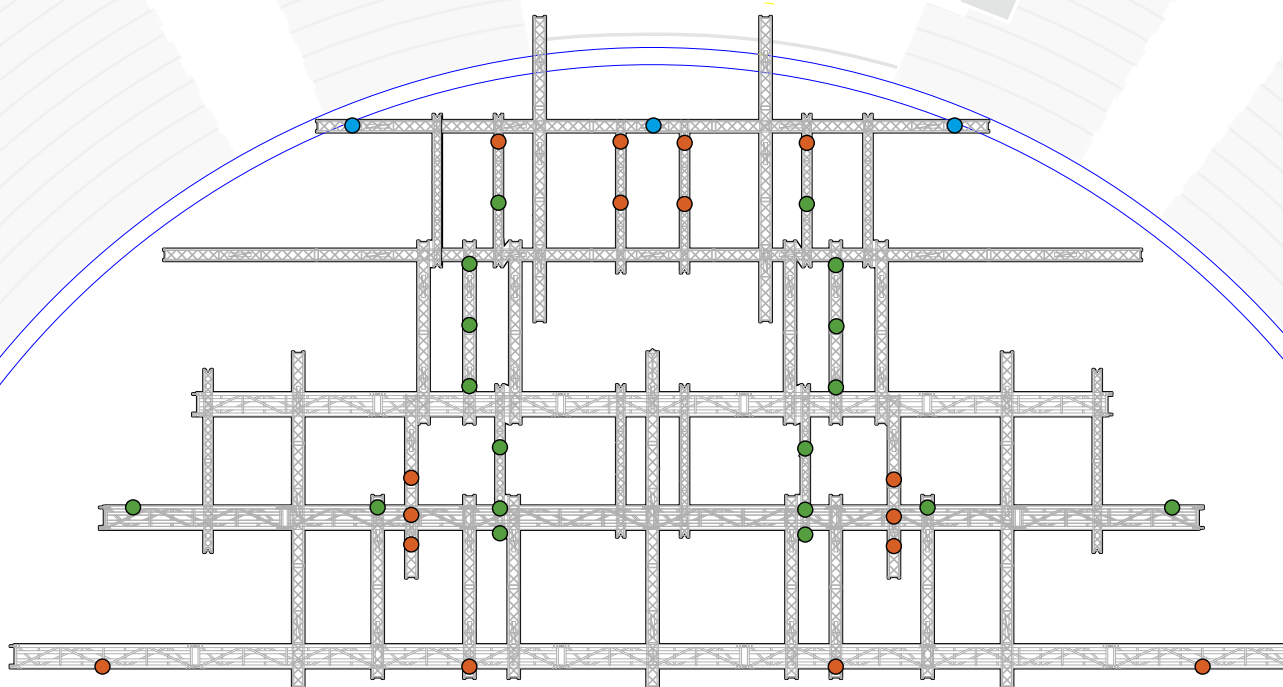
For higher capacity, consult about opening and low visibility.

For other track formats, 360° or similar, consult options.





FIXED EQUIPMENT



RIGGING MAP

The Tarraco Arena has a rigging grill installed using the Mammoth Prolyte M145RV system.

The installed grill transmits loads to the fixed dome of the enclosure, being capable of supporting up to 40 tons of load. This grid has a fixed complement of 32 certified rigging points, 16 of them of **850Kg**, 18 of **500Kg** and 3 of **250Kg**.

There are also 12 additional points (H) to extend the grid or reconfigure it to be able to offer loads at any point on the arena and/or in 360° configurations on the fixed dome.

FIXED EQUIPMENT

SOUND

- 1 Line array Martin Audio WPSL: 8xWPS / R: 8xWPS / Sub: 8xSX218 / FF: 6 x X10
- 1 Midas M32R + 2u DL16

LIGHTING

- 1 MA Command Wing
- 1 Chauvet Nodo NET-X II
- 8 Cameo Opus S5
- 16 Chauvet Rogue R2X
- 4 ProLight Blinder 4 Pro
- 1 Lighting cable kit 3 pin
- 2 Cameo Instant Hazer 1500T Pro



STRUCTURES AND RIGGING

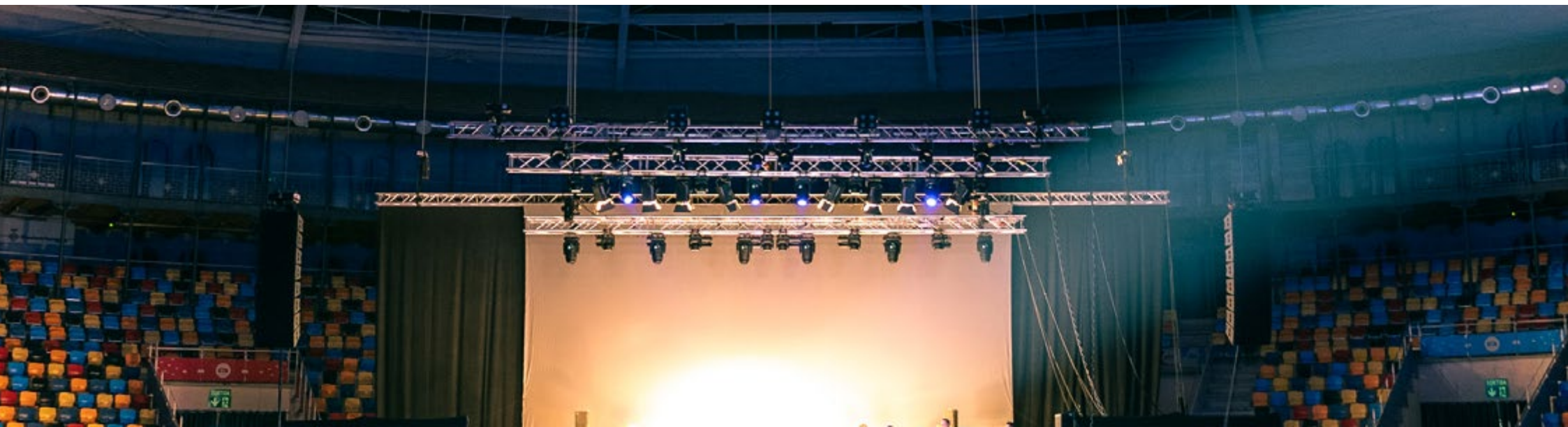
4 Truss30 12m bridges

- 10 500kg D8+ Motor
- 1 4ch Motor Control Case
- 1 Motor cable kit

- 8 Eller-SWL 2t slings. / 2m.
- 16 Global Truss F34300
- 2 Fantek FT 7045

STAFF

- 1 Sound technician
- 1 Lighting technician



FIXED EQUIPMENT

SOUND COVERAGE EXPANSIONS

If you need to cover the main central stands FG-GH, the number of tops of the main PA can be expanded at an additional cost.

*If the fixed endowment has to be removed, the client must assume the removal and relocation costs.

SOUND LIMITATION SYSTEM

Tarraco Arena complies with municipal acoustic regulations regarding noise emissions; for this purpose, the room has special soundproofing that allows it to operate at levels close to 101 dBA at the control point.

During daytime hours through the use of its own sound limitation system that can be inserted in the FOH table. The acoustic regulations authorize daytime levels until 11 p.m., at which point the limitation system must be readjusted to continue complying with nighttime regulations.



ELECTRIC SYSTEM

Tarraco Arena has enough electrical power to service all events without the need to hire additional power or install generators of any type (not allowed by municipal regulations).

Tarraco Arena is powered by a double header transformer directly from the medium voltage network, so it has secured and redundant power.

The facility has an emergency generator that supplies emergency lighting in the event of a total loss of electrical energy. Thus ensuring the evacuation of the premises

The venue has multiple outlets distributed throughout the space, mainly the stage area at the entrance to door 17 where the main head panel is located to feed the events.

In addition, the plaza has 63 A, 32 A and 16 A outlets distributed throughout the premises, in power panels, both on the ground floor ring and on the second floor.

The system consists of a main panel capable of serving all events, with a maximum power of 1,000 A direct to the headend.

This painting has 3 main shots.

- 400 A socket using POWERLOCK connection system.
- Take an additional 400 A through the POWERLOCK connection system.
- Take an additional 250 A through the POWERLOCK connection system.

A 25 m 5-wire connection with POWERLOCK connections is connected to the 250 A socket, which ends in the production panel included in the Tarraco Arena equipment. Fully legalized, it allows serving formats that do not consume more than 200 A at 380 V three-phase.

The box has:

- 3 CETACT 63
- 3 CETACT 32
- 1 POWERLOCK socket for extender to 125 A cut.

If using the rest of the outlets, the client must electrically legalize their electrical installation downstream of the Tarraco Arena connections.

Tarraco Arena has a legalization service and energy distribution installation for large format events.

ACCESS

PUBLIC ACCESS

Tarraco Arena has 32 access and evacuation doors in its protection plan. All doors are numbered. Access is configured depending on the event. The main access for the public is through C/ Mallorca through doors 5 and 6. It has direct access from the street to the track without architectural barriers. Depending on the format of the event, the same access is used to access the stands, or if they are large-format events, access is via the Jaume I stairs.

ARTIST/PROMOTER ACCESS

Access for artists / production vehicles / musicians is via Ibiza Street. The promoter has a number of up to 5 parking spaces inside Tarraco Arena.





TRANSPORT ACCESS AND LOADING/UNLOADING

Tarraco Arena is located in the heart of the city of Tarragona, but with very direct access from the T-11 highway that allows any truck or trailer to reach the venue in a matter of minutes, located at Calle Mallorca nº18, 43001. Tarragona.

Loading and unloading access will be through door number 3, located on Mallorca Street. The measurements of door number 3 allow access to any trailer with normal box measurements, with a width of 3.60 m.



TD

TECHNICAL DOSSIER

Lis Clavell

| lclavell@tarracoarena.com · (+34) 630 04 93 72

Toni Mena

| tmena@tarracoarena.com · (+34) 616 80 94 18



TARRACOARENA